

Kinghelm®

项目 Mapx	设定内容 Modification	日期 Date	修改人 Draw	核准 Approve

规格说明: Specifications:

电气特性: Electrical:

1. 额定电流: Current Rating
3.0A/contact terminal
2. 额定电压: Voltage Rating
30V DC
3. 接触阻抗: Contact Resistance
30 milliohms MAX
4. 耐电压: Dielectric Withstanding Voltage:
500 V AC AT Sea Level
5. 绝缘阻抗: Insulation Resistance:
1000MEGA ohms MIN

物理性能: Mechanical:

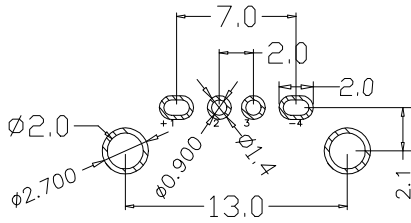
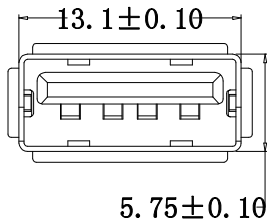
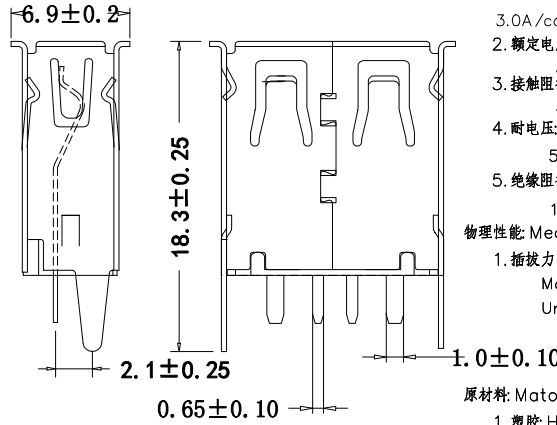
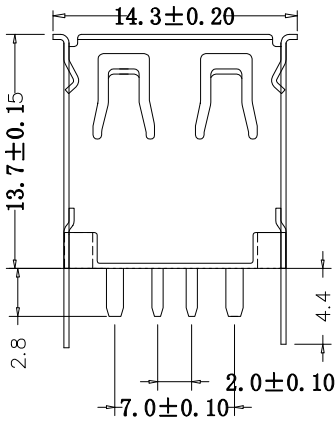
1. 插拔力: Connector Mate and Unmate Force
Mate force: 3.57kgf(MAX)
Unmate force: 1.02kgf(MIN)

原材料: Material:

1. 塑胶: Housing:
Hing Temperature Ternmaplastics,
2. 端子: Contact: Copper Alloy C2680
3. 外壳: Shell: Copper Alloy C2680/SPCC

电镀: Finish:

1. 端子: Contact: Plated Gold in Mating Area;
Tin On Solder Tails
端子四周镀50U" (MIN) 锡, 镀金区域镀100-200U" 镀金1U"
2. 外壳: Shell:
铜壳四周镀80U" (MIN) 锡
Nickel Plating



成品图 MANUFACTURING DRG		深圳市金航标电子有限公司		WWW.BDS666.COM	
公差一览表 TOLERANCE UNLESS OTHERWISE		KH-AF180ZJ-13.7JB-DA		0755-83044319	
.X±0.20	X±5°	日期 DATE	2016.10.20	单位 UNIT	制图 DRAWING
.XX±0.10	.X±2°	审核 CHECKED		比例 SCALE	1:1
.XXX±0.02	.XX±1°	核准 APPROVE		设计 DESIGN	LIUFU
				角法 VIEW	品名 NAME
					版本 VER
					NO
					页教 SHEET
					001

1 2 3 4 5 6 7 8