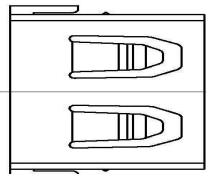
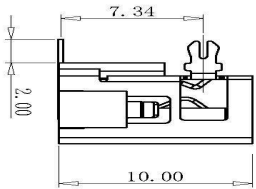
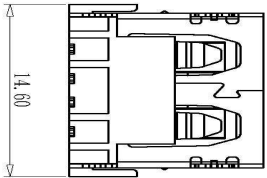


SECTION A-A



规格说明: Specifications:  
电气特性: Electrical:

1. 额定电流: Current Rating  
1.5A/contact terminal
2. 额定电压: Voltage Rating  
30V DC
3. 接触电阻: Contact Resistance  
30 milliohms MAX
4. 耐电压: Dielectric Withstanding Voltage:  
500 V AC AT Sea Level
5. 绝缘电阻: Insulation Resistance:  
1000MEGA ohms MIN

物理性能: Mechanical:

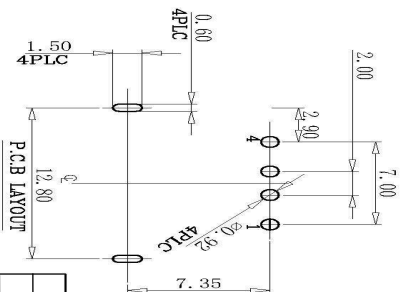
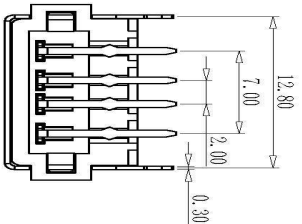
1. 插拔力: Connector Mate and Unmate Force  
Mate force: 3.57kgf (MAX)  
Unmate force: 1.02kgf (MIN)
2. 端子保持力: Terminal Retention  
1.2kgf (MIN)

原材料: Material:

1. 塑胶: Housing:  
Hing Temperature Thermoplastics,  
Ul 94V-0 PBT White/Black
2. 端子: Contact: Copper Alloy C2680
3. 外壳: Shell: Copper Alloy C2680/SPCC

电镀: Finish:

1. 端子: Contact: Plated Gold in Mating Area;  
Tin On Solder Tails
2. 外壳: Shell:  
Nickel Plating



深圳市金航标电子有限公司		图号 (DWG NO)	单位 (UNIT) : MM
MMWL.BDS666.COM		版本 (REV)	A/0
KH-AF900C-10-H6.8		日期 (DATE)	2012.06.08
0755-83044319		设计 (DESIGN)	
品名 (ITEM NO)	A/F 壳体10.0 DIP (两脚无卷边=6.8)	审核 (CHECKED)	公差 TOLERANCE UNLESS NOTED
料号 (PART NO)		核准 (APPROVED)	L X ±0.30 L X X ±0.20 X X ±0.10 X X ±5° L X ±2
型号 (MODEL NO)	A008-II-2		