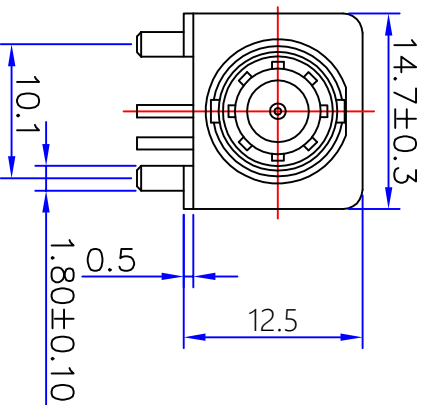
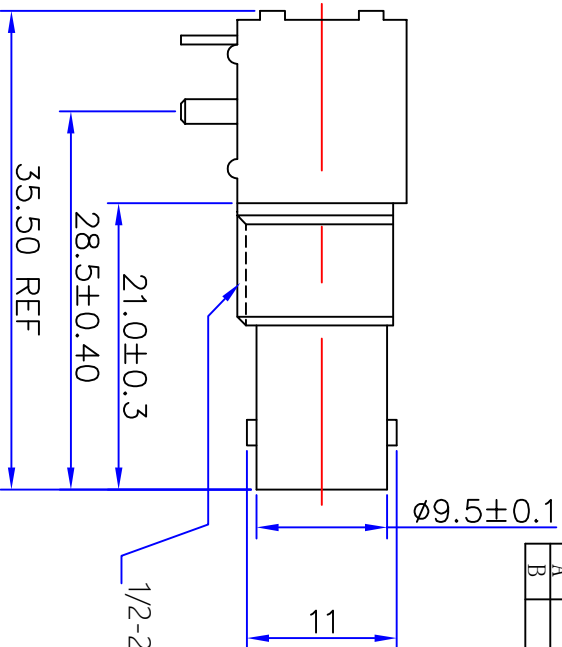
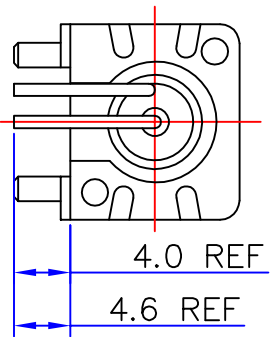


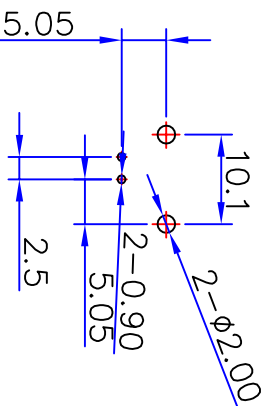
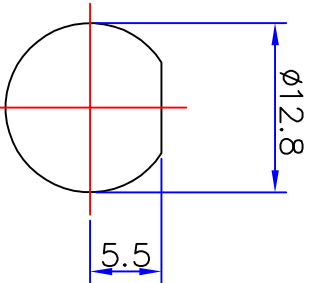


Kinghelm®



Specifications

Impedance: 50 Ohms
 Frequency Range: DC~3G
 VSWR: 1.3MAX
 Working Voltage: 500V rms @ sea level
 Insulation Resistance: 5000 Ohms min
 Temperature Range: -55°C T0 +155°C
 Relative Temperature: ≤95% (40° C±2° C)
 Drawings products are in line with ROHS standards



Product NO.		DOS IN-801-0038		
REV	DESCRIPTION	DWN	DATE	APPROVEN
A	First Issue	JIM	2012/11/02	John kine
B	尺寸调整	W.cheng	2020/05/05	John kine

1	Body	Zinc	NI:80-120u"
2	Center contact	Brass	AU:1u"
3	Lead	Iron	AU:1u"
4	Fixed footrest	Iron	NI:80-120u"
5	Insulator	POM	White
6	Fixed mount	PBT	White
7	Washer	Brass	NI:80-120u"
8	Hex nut	Brass	NI:80-120u"

NOTE:

Tolerance

0-6
6-30
30-120
Angular
±2°

View



UNIT

MM

Name: **BMC WHITE JACK CONNECTOR (12.5MM)**

深圳市金航标电子有限公司 **WWW.BDS666.COM**
KH-BNC50-3511 **0755-83044319**

SIZE: A
 Product NO. DOS IN-801-0038

REV B

Date/Time: 2012/11/02
 CAD FILE: D:/company drawings/BD

SHEET: 1 OF 1

Component Number	Material	Finish	APPROVALS 张松强	12/04/2012	SCALE	1:1	DATE	2012/11/02	CAD FILE	D:/company drawings/BD	SHEET	1 OF 1
------------------	----------	--------	------------------	------------	-------	-----	------	------------	----------	------------------------	-------	--------