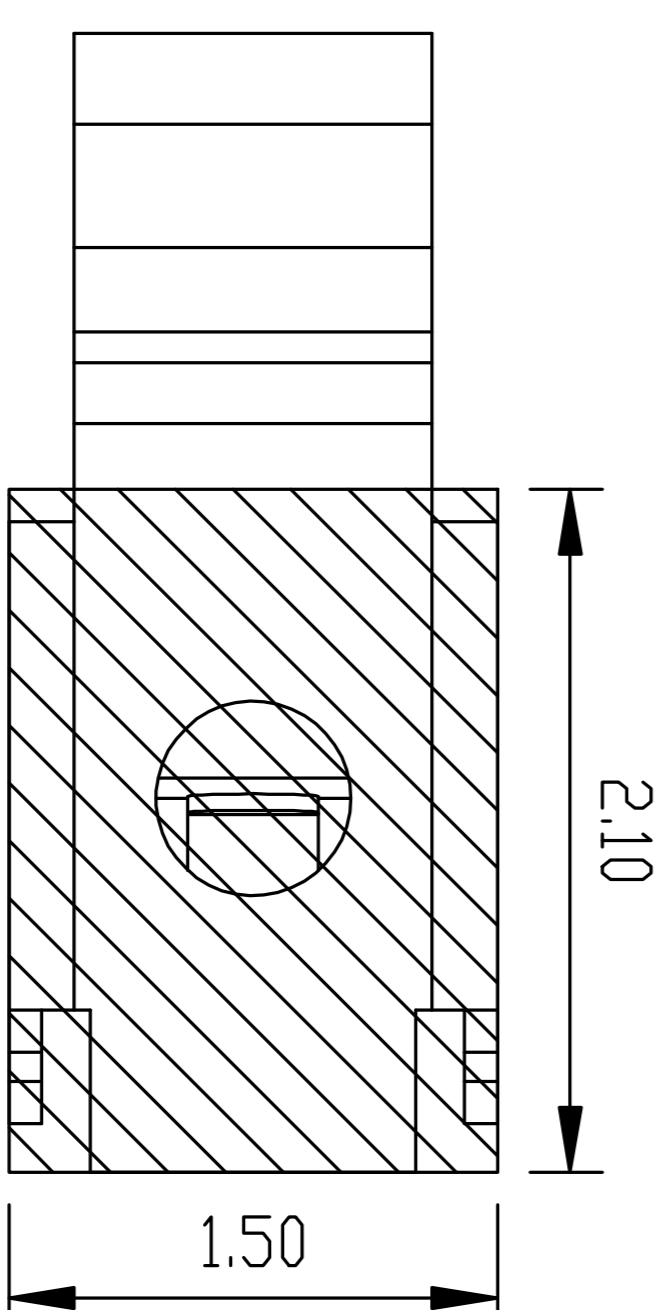
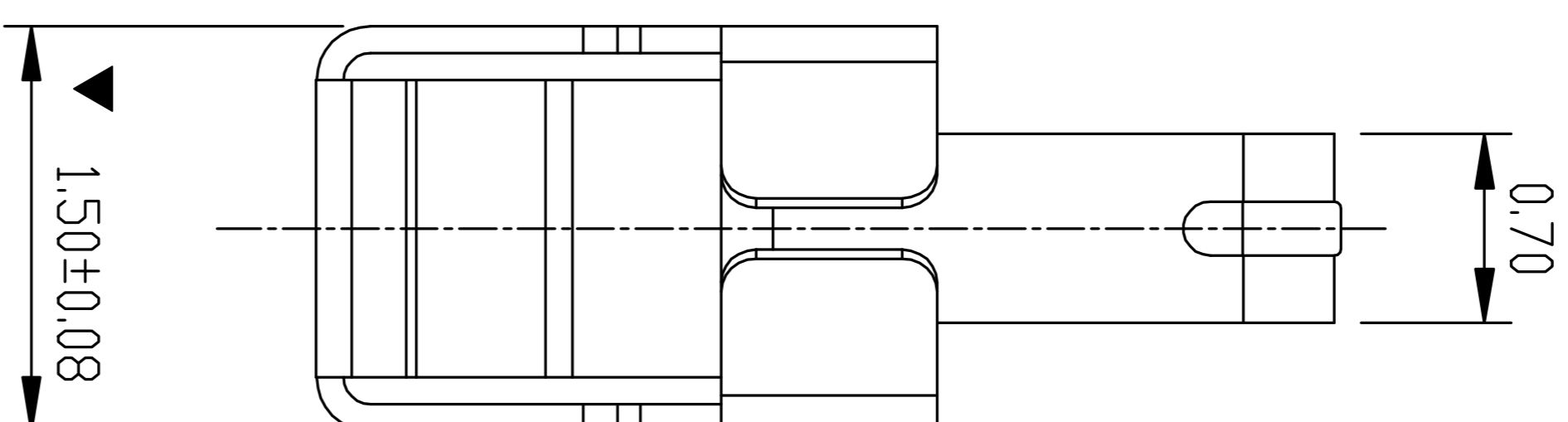
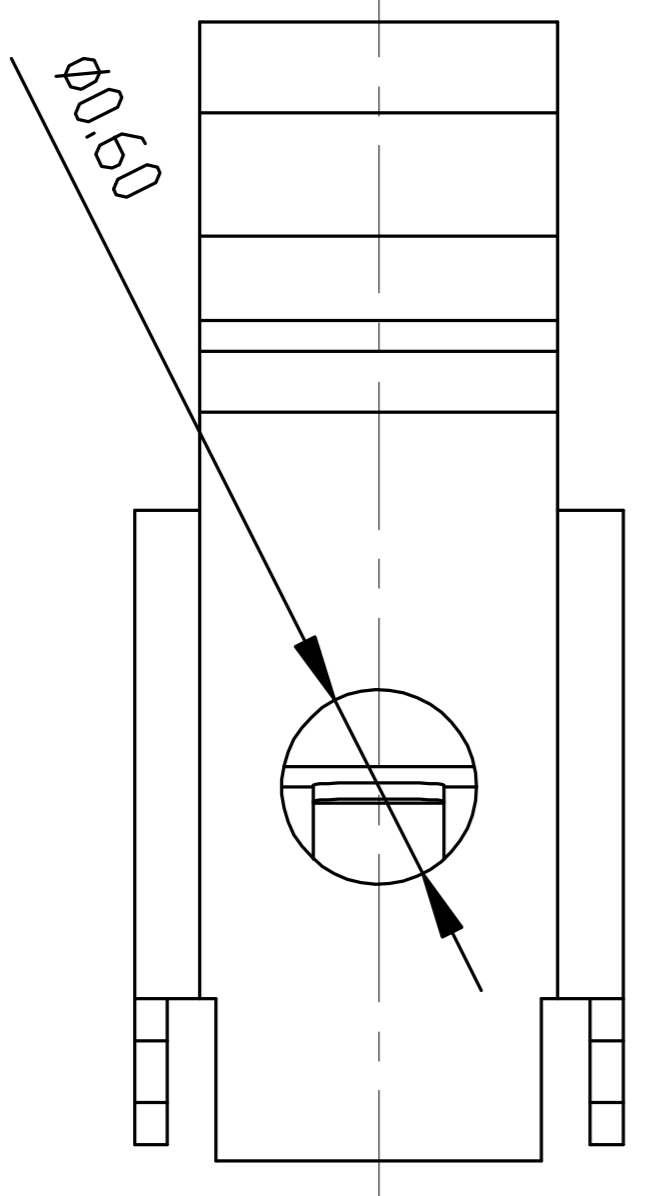
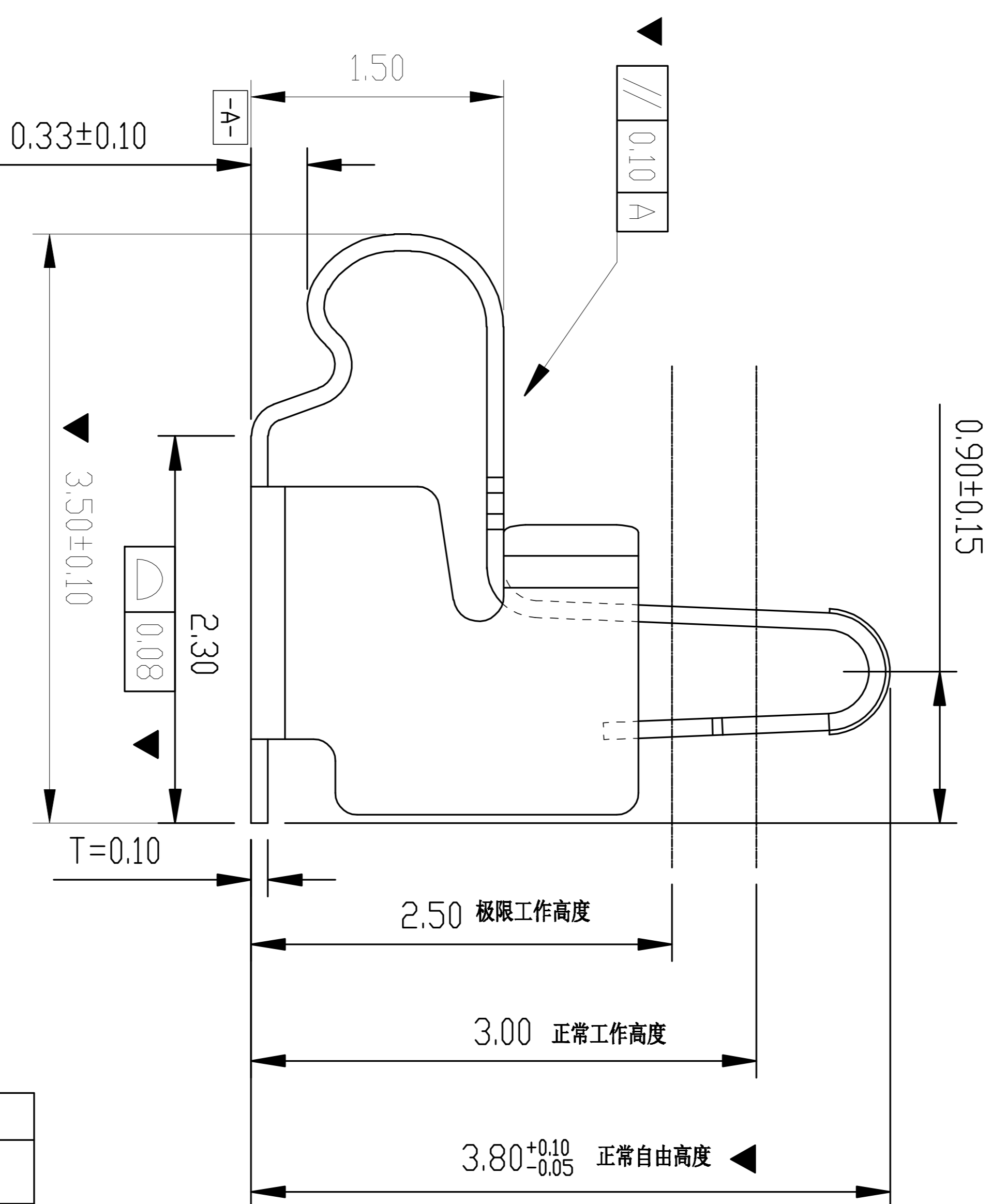
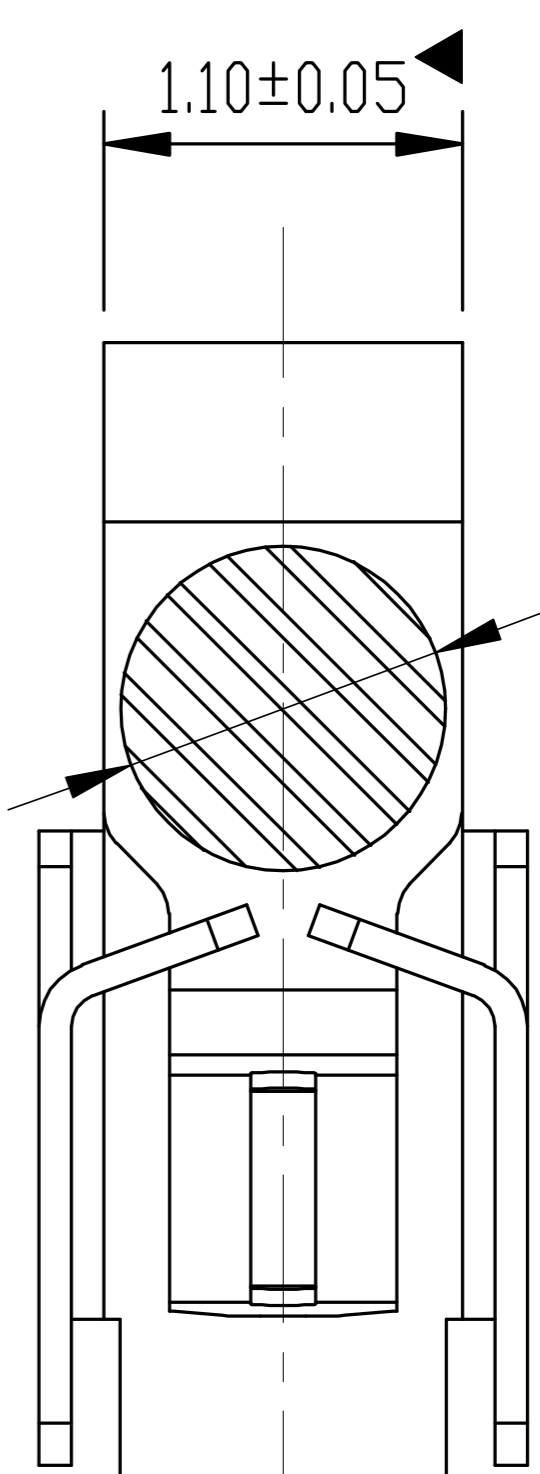
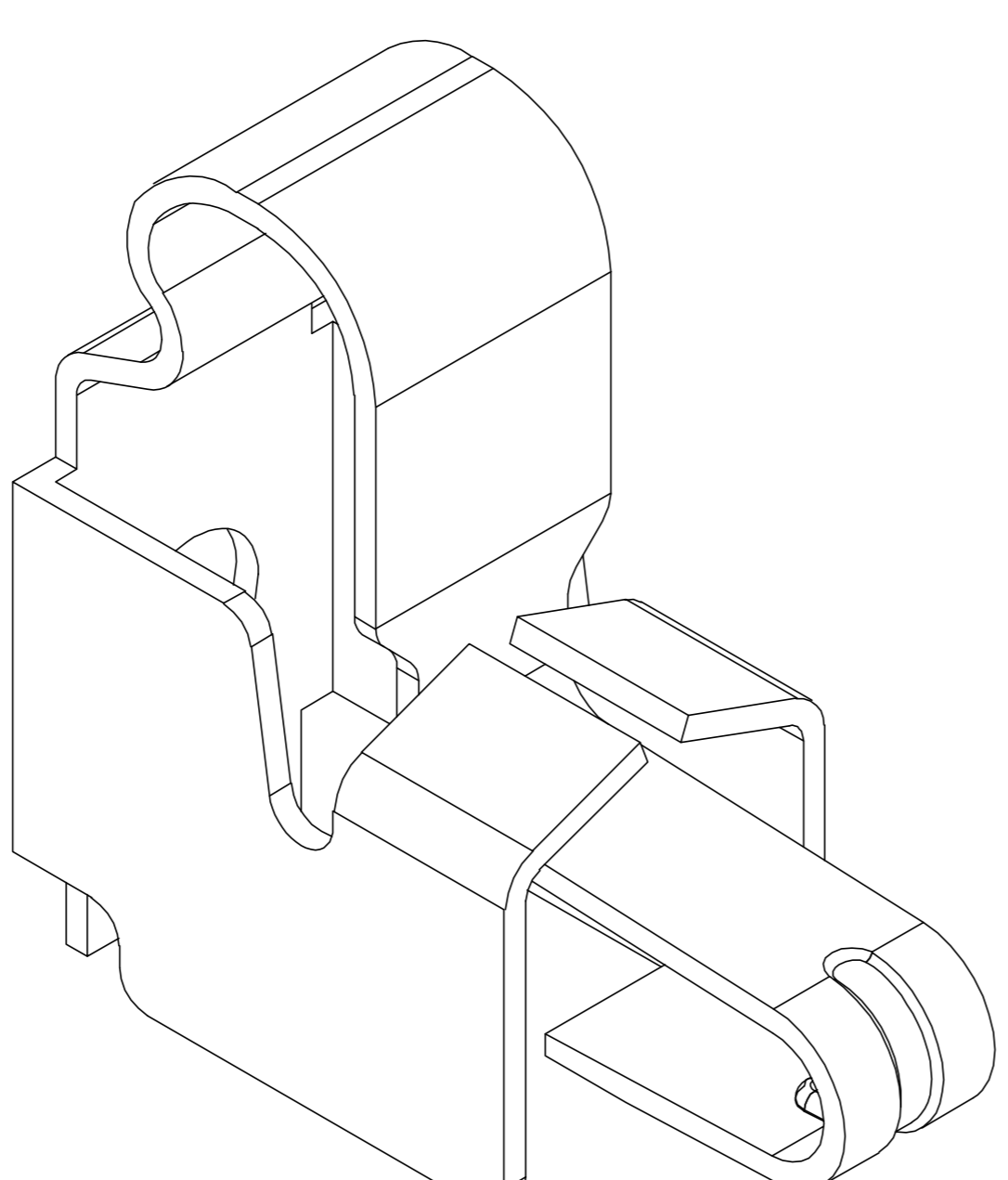


吸盘位置



尺寸公差 ±0.05

焊盘尺寸



技术要求:

1. 材质: 不锈钢 SUS304, T=0.10 ± 0.005;
2. 端子锡脚焊接面和接触面不可有毛边, 其他部位毛边最大 0.03mm;
3. 扭曲: 4.5° / 10000mm, 拱形 5mm / 10000mm;
4. 标示有“▲”符号的为重点控制和检验尺寸;
5. 未标注之 R MAX R0.13;
6. 电镀须满足 48 小时盐雾测试;
7. 寿命测试 > 2 万次, 产品弹力要求在 60gf ~ 80gf 之间
8. 镍底 50 ~ 80u"min, 焊接区域镀金, 接触区域镀金 3U"MIN

深圳市金航标电子有限公司
WWW.BDS666.COM
型号: KH-351538-TP
0755-83044319

GENERAL TOLERANCE	
XX. ±0.50	
X. ±0.35	X.° ±2.0°
.X ±0.25	.X° ±1.0°
.XX ±0.15	.XX° ±0.5°

SCALE:	1:1
UNIT:	mm
SIZE:	A4

DRAWN	CHECK	DATE
APPROVE		DATE

DWG. NO.	681-0019B-1
PARTS NO.(INTENDED USE)	FDX0019B1

TITLE	客户图
REV.	A
SHEET	1/1

Rev.	ECN Number	Description	Date	Drawn	Checked	Approved